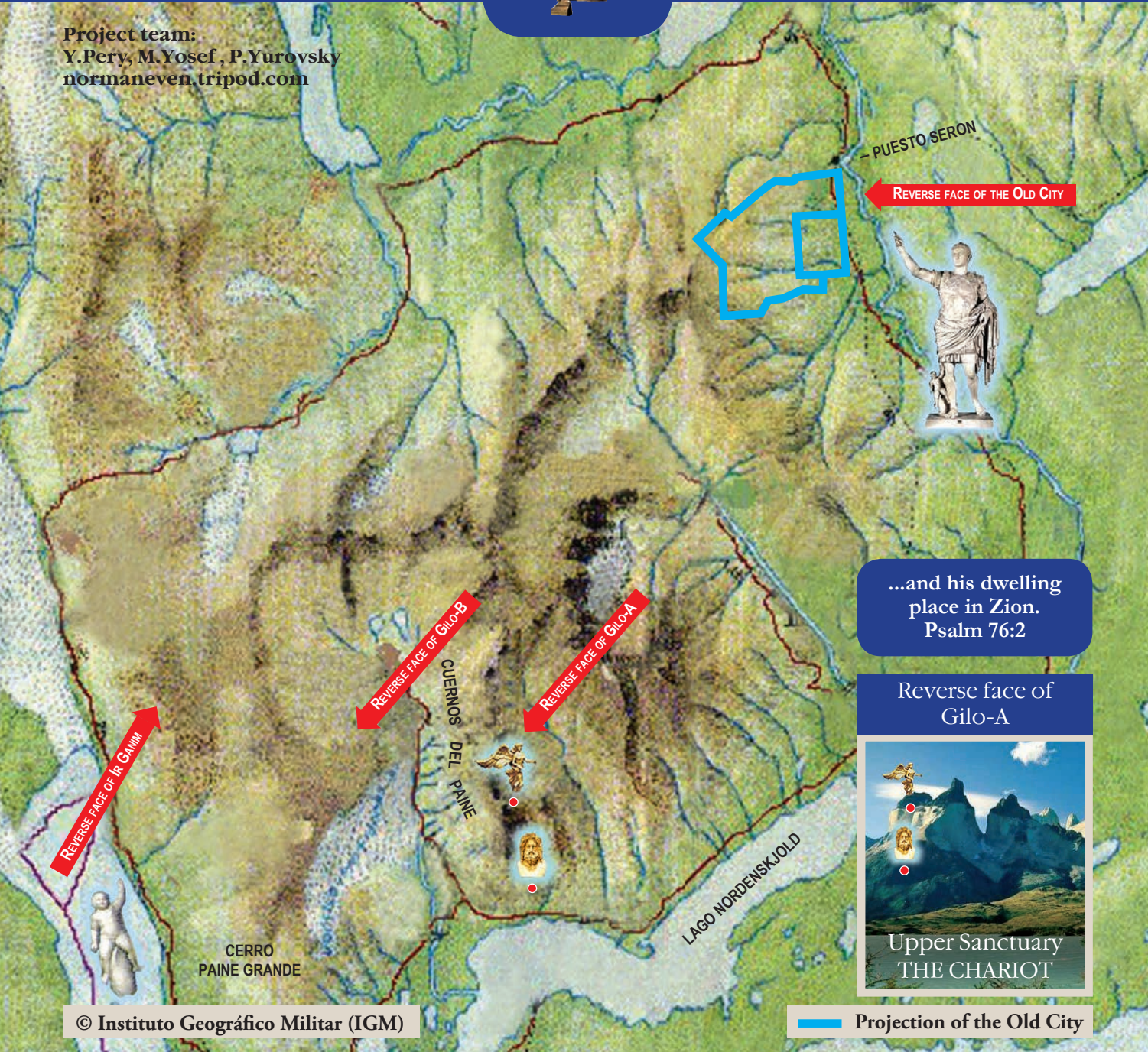




# DOUBLE SIDED MAP OF JERUSALEM AND PARQUE TORRES DEL PAINE BEDROCK



Project team:  
Y.Pery, M.Yosef, P.Yurovsky  
normaneven.tripod.com



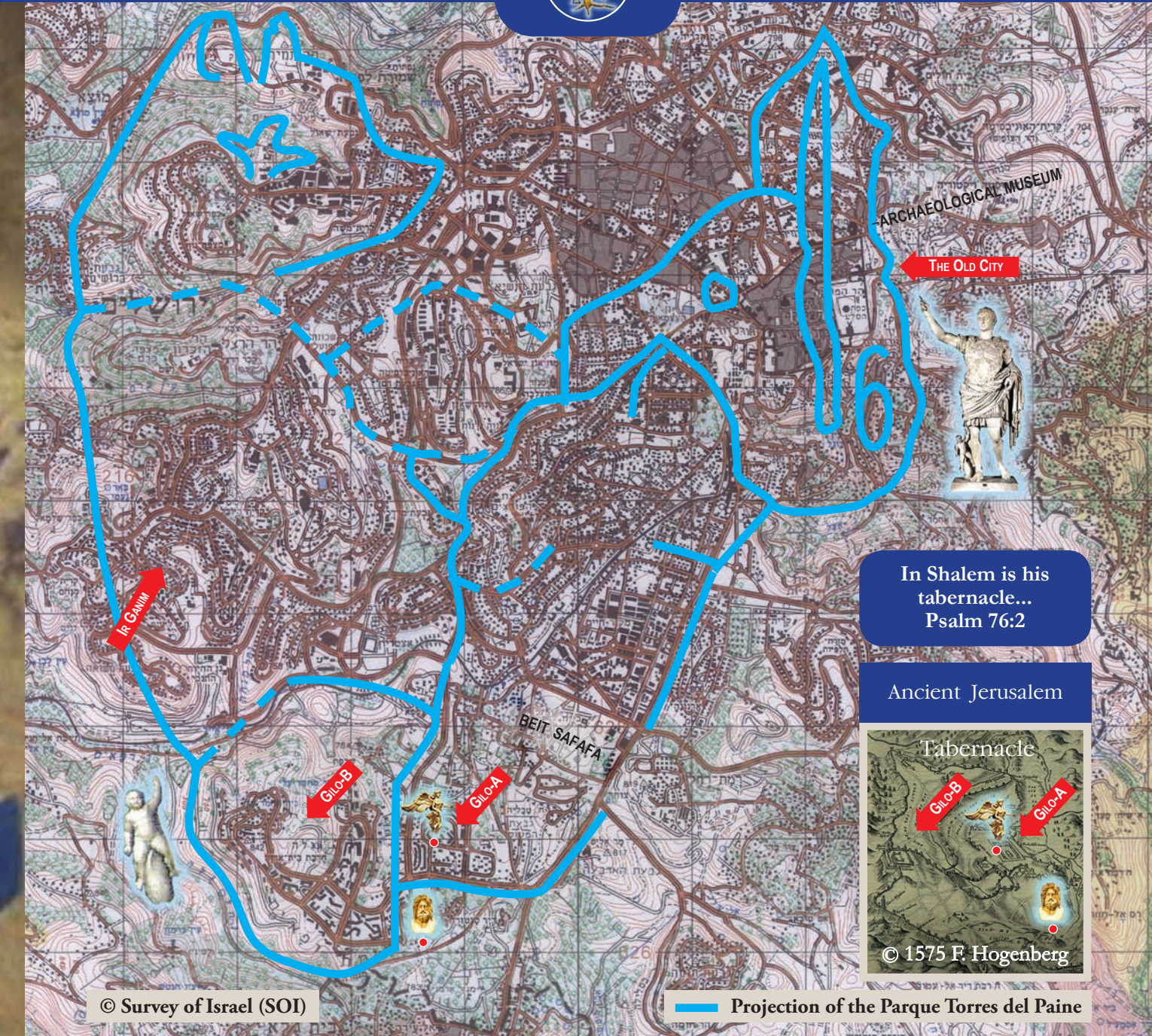
PARQUE TORRES DEL PAINE

Time : 4 hours behind GMT

Scale 1 : 150,000



"...Zion stands with this mountain [Purgatory] in such wise on the earth that both have diverse Hemispheres but a single Horizon..." Dante Alighieri (1265-1321). The Divine Comedy. Purgatory, Canto IV, 67-70

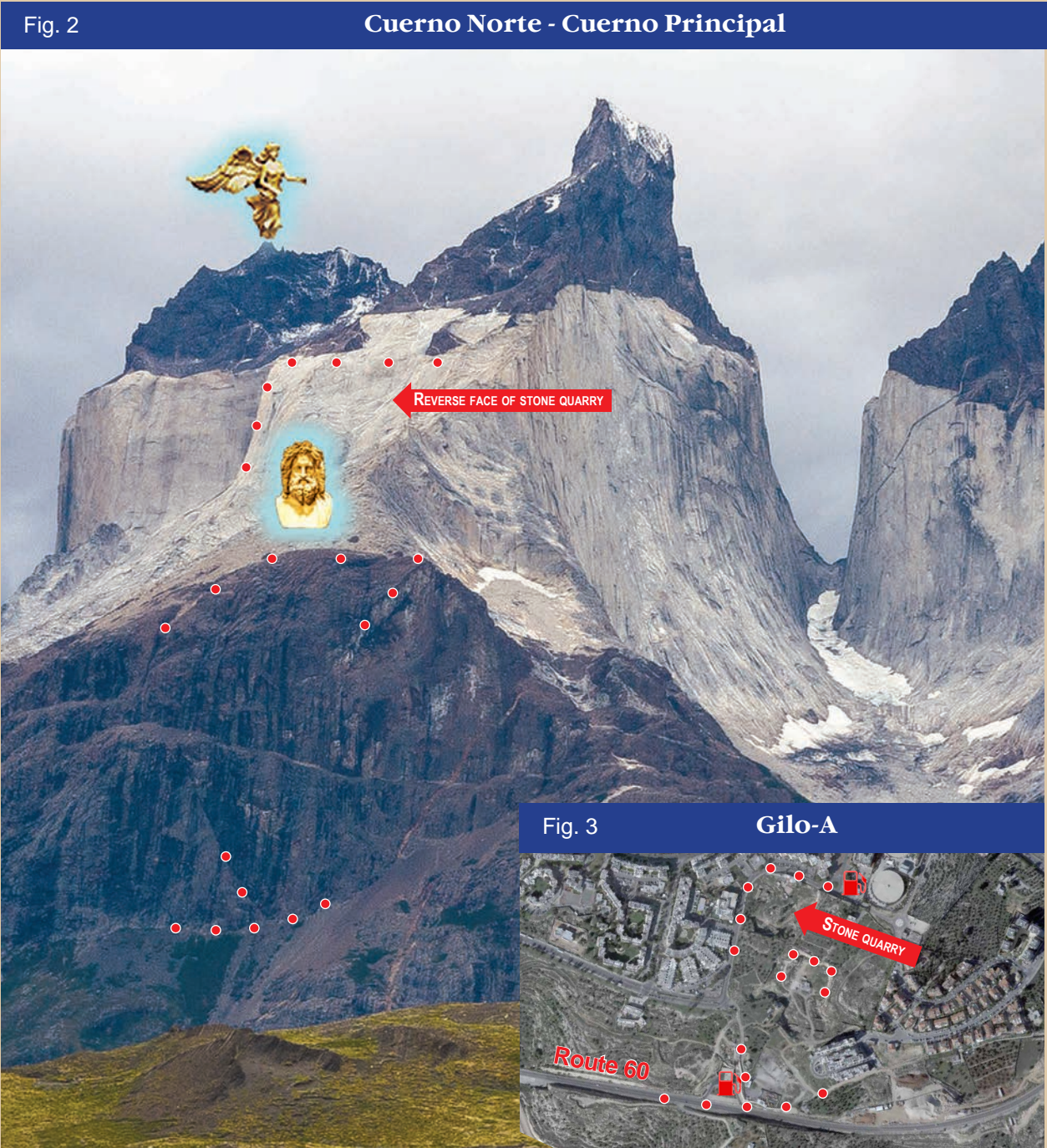


JERUSALEM

Time : 2 hours ahead of GMT

Scale 1 : 50,000



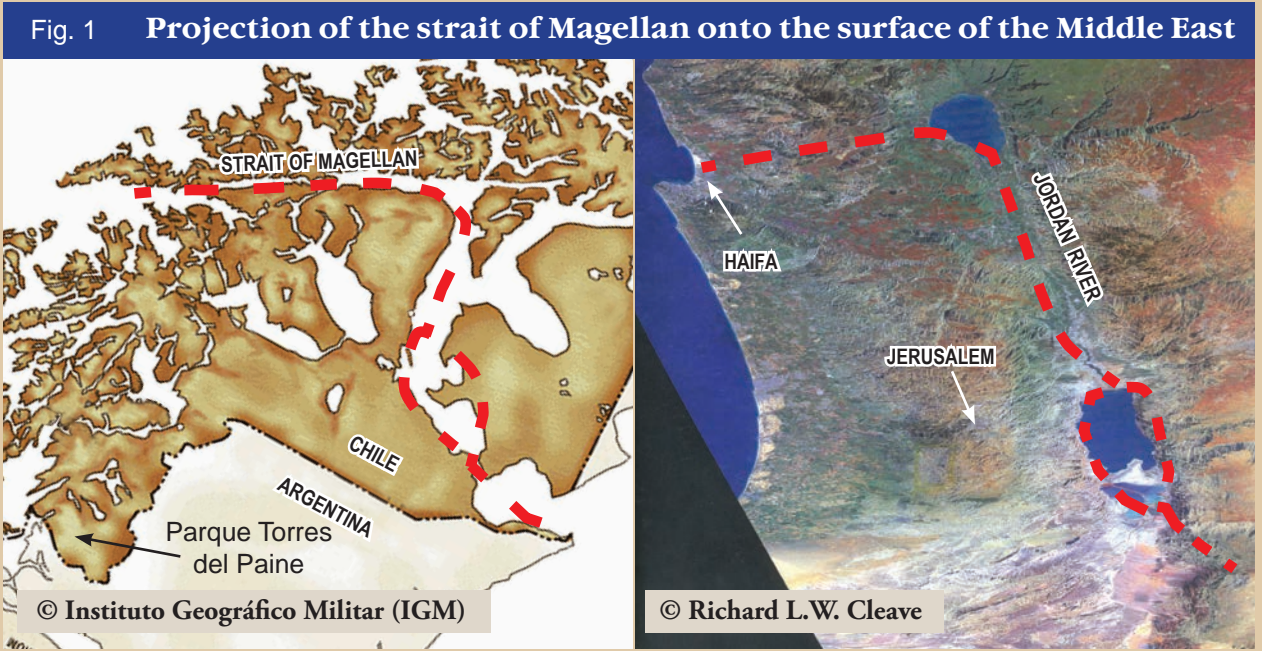


"The Temple Mount was 500 cubits by 500 cubits (250 m x 250 m)." Middoth Ch. 2  
"...God brought me into the land of Israel, and set me upon a very high mountain... and behold, there was a man... with a line of flax in his hand, and a measuring reed and he stood in the gate. Ezekiel, 40:2-3

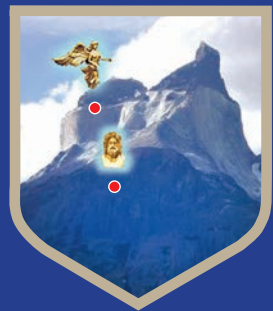


Since the time of the Exodus from Egypt there is evidence that on the reverse face of Jerusalem bedrock there is situated a divine chariot – Merkabah, the heavenly pattern of the Temple. Based on this esoteric information, a doctrine was presented in the Middle Ages that the southern hemisphere starts just behind the sealed gates hidden in subterranean chambers of Mount Zion.  
On March 19, 2005, the Organization of Ukrainian Surveyors identified the reverse face of Jerusalem bedrock as the Chilean Parque Nacional Torres del Paine, located some 100 km directly north of Puerto Natales in Southern Patagonia (Fig. 1-3).  
Representation of the Parque Torres del Paine on the Chilean IGM maps appears approximately three times larger than the representation of Jerusalem in the transverse Mercator projection.

Project team: Y.Pery, M.Yosef, P.Yurovsky



PARQUE TORRES DEL PAINE



Cuerno Norte Cuerno Principal

Middle East



Central America



ORGANIZATION OF UKRAINIAN SURVEYORS  
GEODESY CADASTRE MAPPING



JERUSALEM

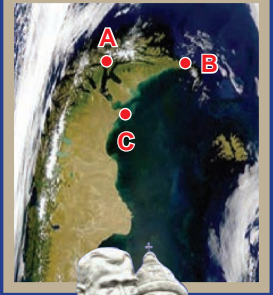


Gilo-A neighborhood

Middle East



Patagonia



ORGANIZATION OF UKRAINIAN SURVEYORS  
GEODESY CADASTRE MAPPING